

12



ROSARIO 2027 • ARGENTINA
WORLD SOYBEAN RESEARCH CONFERENCE

acsoja[®]
Asociación de la Cadena de la Soja Argentina

CONTENTS



1. Host organizations including details of the academic institutions involved.

2. Location of the Conference.

3. Tentative dates (season or month is sufficient)

4. Conference logistics - tours, accommodations, conference facilities

5. Travel logistics – access via air, train, bus, and ground

6. Tentative program (main topics, forums, workshops, tentative schedule)

7. Previous experience in hosting international conferences

8. A list of advisory board members and their affiliations.

9. Approaches to get sponsorship to support the conference

10. Letters of support from local organizations, municipalities, state and federal governments as required

11. Each bid should be accompanied by a clear and concise rationale for why you should host the World Soybean Research Conference XII

Letter from ACSOJA



On behalf of the Argentine Soybean Chain Association (ACSOJA) I would like to invite you all to support the nomination of Rosario - Argentina for hosting the XI World Soybean Research Conference (WSRC) to be held in 2027. Since the establishment of ACSOJA, almost twenty years ago, our technologists have been actively involved in every activity ACSOJA has hosted. Argentina's soybean chain industry has grown remarkably in the past few years, not only in terms of production, but also in terms of acreage and have helped to develop the industrial structure for the elaboration of oils and flour with active participation in the international market of products and byproducts. However, Argentina was not left out of the consequences of climate change, which has caused crop losses in recent years.

We are excited to present our magnificent soybean pole to each technologist, researcher and businessperson related to the soybean sector, in the spirit of building a fruitful scientific and technological exchange with all those who would be willing to visit our country in 2027. Argentina has a unique soybean crushing pole in the world with a daily processing capacity of 207,000 tons per day nationwide, 80% of which are in the area of Rosario and the province of Santa Fe. For these purposes, we are committed to working hard to provide you with the best possible organization to facilitate a very productive meeting together with a pleasant stay in Argentina. Moreover, we propose March 2027 (Fall) as the month of the Conference because it is possible to observe the advance of the soybean crop flowing from the fields to exporting ports and crushing plants. In order to host a successful Conference we rely not only upon our people's hospitality and warmth but also on the committed support of both administrations, national and provincial, to make sure high quality facilities and services will be available for every planned activity.

It is worth mentioning that this would be the second time for Argentina to host a WSRC Conference, such a prestigious, long-term gathering of soybean scientists and technologists.

In summary, the Argentinian soybean chain, the national government and soybean and byproducts producing provinces and ACSOJA would be most honored to welcome you in 2027.

Best regards,

Eng. Rodolfo Rossi
ACSOJA's President

ACSOJA, Argentine Soybean Chain Association

ACSOJA was incorporated by deed on August 11, 2004. The General Inspectorate of Legal Persons acknowledged its legal personality by Resolution No. 1052 of November 16, 2004, and the organization began operations in January 2005. ACSOJA was an initiative by representatives of some of the most significant sectors, who had gathered to exchange ideas and ended up designing what was going to be their bylaws

two years later. ACSOJA was established, with the objective of promoting research and development of soybean and its byproducts regarding internal and external production and commercialization of such products, alone or in cooperation with public or private organizations, both national and foreign. Currently, ACSOJA is mainly formed by institutions; like the following:



Science & Technology

- Obispo Colombres Agro-industrial Research Station (EEAOC)
- Faculty of Agricultural Sciences, National University of Rosario (UNR)
- University of Buenos Aires (FAUBA)
- Association of Soybean Breeders and Researchers (PROSOJA)
- National Institute of Agricultural Technology (INTA)

Agricultural Inputs suppliers

- Argentine Seed Companies Association (ASA)
- Chamber of Agricultural Health and Fertilizers (CASAFE)
- Chamber of the Argentine Fertilizers and Agrochemicals Industry (CIAFA)
- Federation of Agricultural Inputs Suppliers (FEDIA)
- Argentine Chamber of Seeds Multipliers Companies (CASEM)

Production

- Argentine No-till Farmers Association (AAPRESID)
- Argentine Association of Regional Farming Experimentation Consortia (AACREA)
- Argentine Rural Confederation (CRA)
- Argentine Agrarian Federation (FAA)
- Argentine Rural Society (SRA)

Commercialization

- Cordoba Board of Trade
- Entre Rios Board of Trade
- Rosario Board of Trade
- Santa Fe Board of Trade
- Bahía Blanca Board of Trade
- Buenos Aires Board of Trade
- Arbitration Chamber of the Buenos Aires Board of Trade
- Rosario Brokers Center
- Federation of Storage Centers and Grain Handlers'
- Union Entities of the Argentine Republic

Uses & Industrialization

- Argentine Association of Fats & Oils (ASAGA)
- Argentine Association of Post-Harvest Grain Operations (APOSGRAN)
- Argentine Chamber of Biofuels (CARBIO)
- Chamber of the Argentine Oil Industry (CIARA)
- Grain Exporters Center (CEC)
- Center of Poultry Processing Companies (CEPA)

Services

- Council of Agronomy Engineers of the Province of Santa Fe (CIASFE)
- Argentine Banks Association (ADEBA)





About Rosario

Given its geographical location, natural environment and port status, Rosario is a strategic junction of the bi oceanic connection linking Rio Grande Do Sul (Brazil) on the Atlantic Ocean and Valparaíso (Chile) on the Pacific. Major industrial, commercial and financial center, Rosario is in the midst of the humid pampas, in the south of the province of Santa Fe, on the side of the Paraná River, 300 km north from Buenos Aires city.

The main Argentine complex of agricultural exports is located in the metropolitan area of Rosario. ROSARIO, within a radius of 80 km, houses the largest and most modern agro-industrial and crushing pole, as well as export of soybean by-products worldwide.

In 80 km of coastline on the Paraná River in Gran Rosario there are:

- 20 oil factories.
- 29 port terminals that operate different types of cargo.
- 19 port terminals that ship grains and derivatives all over the world.

Of these 19 ports, 12 of them have attached oil factories, some of them, the largest in the world. The Paraná River, which in Guarani

language means “king of the sea, son of the rains”, borders the city and branches out in an extensive delta, offering an ecological paradise and natural shelter just meters from the big city. Rosario is said to be “daughter of the ships”, as it knows no other founder than the flow of thousands of men and women who in the mid nineteenth century sailed up the Paraná River to build their lives here and realize their dreams.



About Rosario

Rosario is the largest city in the province of Santa Fe. It is located in the center-east of the country, on the right bank of the Paraná River, at a point between the different regions of the country. It is linked by highways to Buenos Aires (300 km), Córdoba (400 km) and Santa Fe City (150 km).

It is also strategically located within Mercosur, as key point of the bi oceanic Corridor that runs from the Atlantic (Brazil and Uruguay) to the Pacific (Chile) and of the Paraná waterway that joins the extensive region of the littoral and northern Argentina with Bolivia, Paraguay and Brazil.

The Rosario Board of Trade, cereal, and equity markets is considered among the most important in the country and South America and reflects the activity of one of the world's leading agricultural regions.

Universities and Research & Development Centers are highly prestigious and the scientific level of many of the different disciplines is well known internationally. The UNR has a postgraduate course in Plant Breeding.

INDEAR is a research and development company located in Rosario and is the R&D company of Bioceres. It is focused on agricultural biotechnology and has advanced platforms in Latin America.

INDEAR is located in the Rosario Technological Center, which is a science and technology center in Rosario that employs over 3,500 people working on areas such as biotechnology, software development, and telecommunication.

- **9 public and private universities**
- **6 university research institutes**
- **50+ professional associations**

Rosario Technological Pole: positions Rosario and its region as an international reference center in development scientific and technological innovation through new forms of management that articulate the public and private spheres and scientists. It has 65 associated companies. Rosario is an important logistic center, with its railway and road networks providing access and distribution opportunities, reinforced by its international airport.

Planners of Trade Fairs, Conferences, and Conventions can find conference rooms and premises with modern infrastructure and technology. Local service providers have a very professional and internationally recognized experience.

The city has a healthcare system with high standards of quality and service that places it among the best ones in Argentina.

A strong cultural activity takes place in the city in all the artistic disciplines, with values that surpass national and international expectations.

The Aapresid Congress is an annual event organized by the Asociación Argentina de Productores en Siembra Directa (AAPRESID) currently in Rosario. The 30th edition of the event, took place in August 2022 at the Salón Metropolitano in Rosario. There were more than 4,000 attendees.

The Third International Congress of the Spanish Language was a cultural event that took place in Rosario, Argentina, on November 17-19, 2004. The VIII International Congress of the Spanish Language (CILE) is a forum for reflection on the Spanish language, where its current situation, problems, and challenges are discussed. The Ministry of Foreign Affairs, the Royal Spanish Academy, and the Cervantes Institute organize the International Congress of the Spanish Language, which is held every three years.

The Third International Congress of the Spanish Language was a cultural event that took place in Rosario, Argentina, on November 17-19, 2004. The King and Queen of Spain Juan Carlos and Doña Sofía participated in the opening ceremony. The VIII International Congress of the Spanish Language (CILE) is a forum for reflection on the Spanish language, where its current situation, problems, and challenges are discussed. The Ministry of Foreign Affairs, the Royal Spanish Academy, and the Cervantes Institute organize the International Congress of the Spanish Language, which is held every three years.

Public spaces, entertainment and leisure sites are varied enough to satisfy all tastes and ages.

Rosario is a hospitable city. The origins of its population, of many different ethnic backgrounds, and its development linked to trade and port activities have given rise to a cosmopolitan culture that is warm and pleasant for all its visitors.

Metropolitan Area

The city has a surface area of 170 square kilometers inhabited by 1,050,000 people. Considering the interactive territory from the economic, social and cultural point of view, Rosario is the hub of 12 localities with an urban continuity.

This arc formed on the east by the Parana River comprises the largest export complex in the country and, regarding cereals, oil seeds products and oils, it is the most important in the world.

From its ports, diverse products are shipped,

such as the commodities mentioned above, biofuel, ferrous byproducts, petrochemical products, cellulose and auriferous minerals, which are transported from the mines in the north of the country. Thus, the Greater Rosario hinterland is the communication core between the countries of the Mercosur; and it is, also, a compulsory pathway for the commercial routes and a service delivery center. Through its participation in the Mercocities network –formed by the most important urban clusters in Argentina, Brazil, Uruguay, Paraguay, Bolivia, and Chile– Rosario is also playing a key role in the integration of such areas from a social and cultural standpoint.

Rosario is at the center of the most important agriculture and livestock productive region in the country, and one of the most relevant in the world; its 15-kilometer riverside shared with the majestic Parana River was, undoubtedly, a determinant for its development.



Metropolitan Center for Events & Conventions

Metropolitan Center for Events & Conventions has a large auditorium, unique for its dimensions and characteristics in the Argentinean provinces, **1,960 m2 and 11 m of free height and a second auditorium of 700 m2 and 7 m of free height**, both with impeccable acoustics, thanks to a treatment designed and executed by specialists.

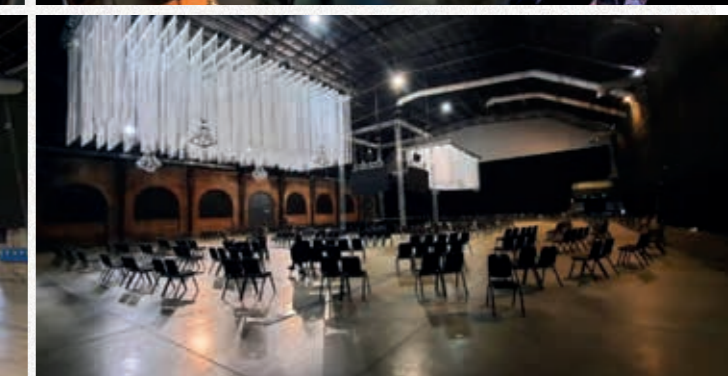
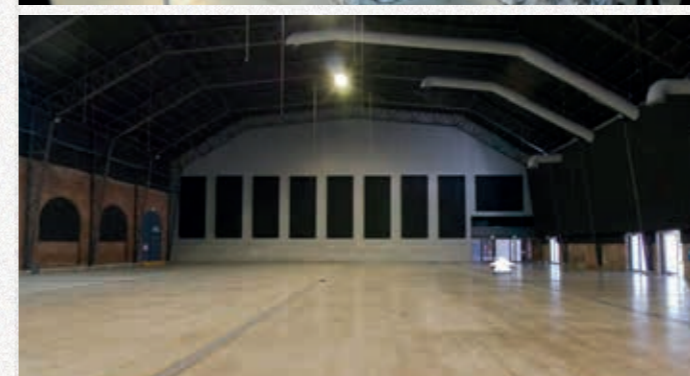
The larger hall can be configured in various ways, being able to accommodate up to **2,500 seats**. Both spaces can operate in a unified form obtaining a suitable surface of **2,600 m2 and a capacity of 3,200 seats**.

On the ground floor there is a **room of 400 m2** which in turn can be subdivided into three smaller rooms and an entrance **hall of 600 m2**. On the upper floor there is a fourth auditorium **hall of 400 m2 and a video conference room of 50 m2**.

The Events and Exhibitions Center redoubled its commitment by presenting a new space, a second property with similar characteristics and whose success has been demonstrated since its opening.

The dimensions doubled and the possibilities for holding events, exhibitions, congresses and large shows multiplied: 2,473 m2 were incorporated into the space inaugurated in 2007, to reach nearly 5,000 m2 with a capacity to accommodate around 10,000 people. Both the structure and its equipment give versatility to the entire proposal, becoming a place of innumerable possibilities.

To this is added a careful acoustic treatment, structural elements that allow the space to be organized in different ways, ease and speed in the entry and exit of people, technology and security. Different simultaneous activities, massive recitals, shows with large stage or stage structures.



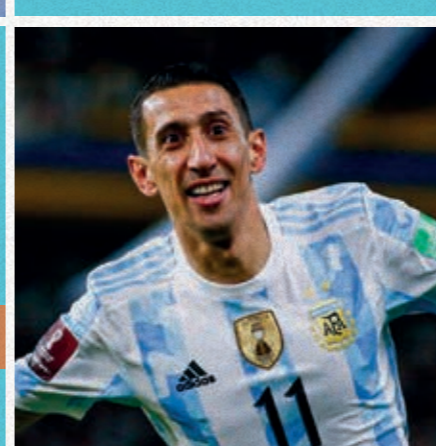
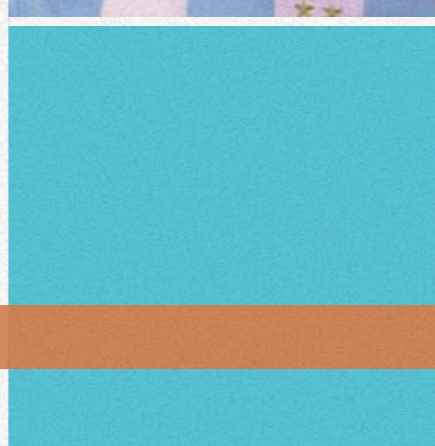
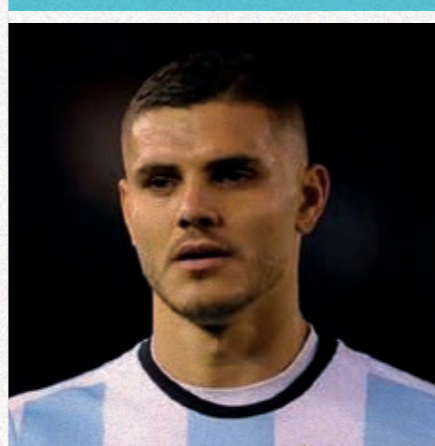
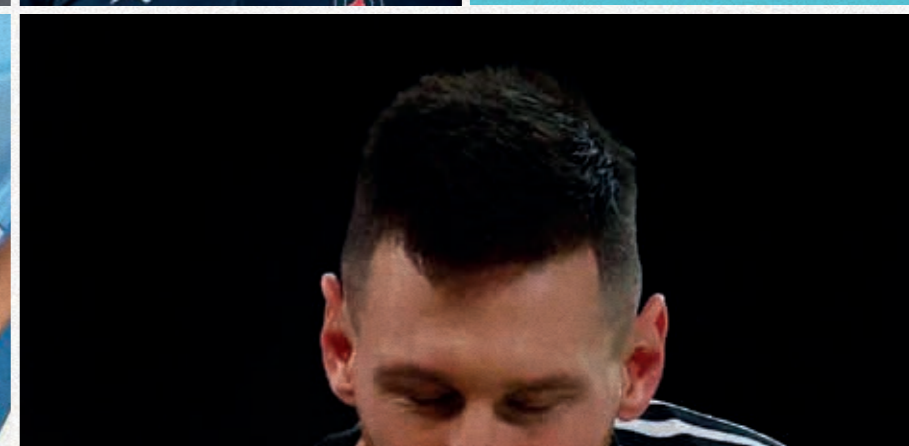
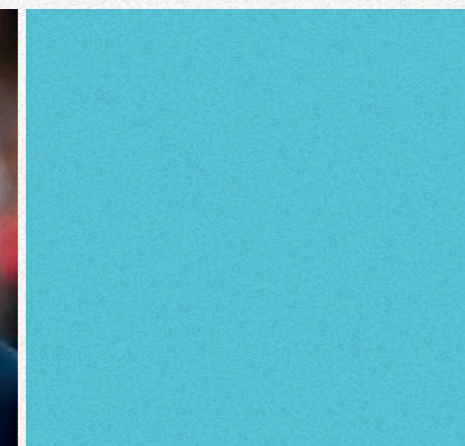
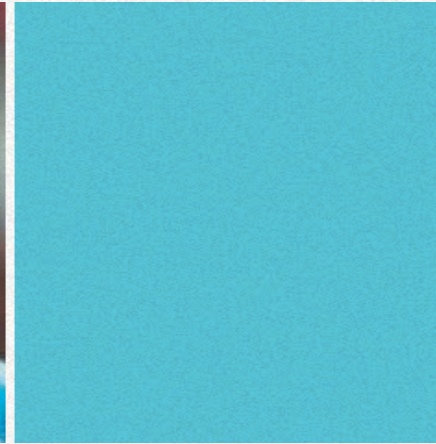
Soft News

Rosario is home to many sports teams and has a rich history of athletic competition.

The city is known for producing many great athletes, including **Lionel Messi** and other famous football players such as **Ángel Di María**, **Maxi Rodríguez**, **Mauro Icardi**, **Ángel Correa**, **Giovanni Lo Celso**, **Ezequiel Garay**, **Jorge Valdano**, **Mauricio Pochettino**, **Gabriel Batistuta**, **Mario Kempes**, and **Néstor Sensini**. Rosario is named "la cuna de futbol" or the cradle of football.

In 2019, was designated the national capital of sports in Argentina. hese athletes have excelled in football, gymnastics, and field hockey, among other sports. Rosario is known as "la cuna de futbol" or the cradle of football, and its youth systems have produced many successful athletes.

It is a pride to have some other famous athletes from other sports who were born in the city such us hockey, gymnastic, rowing, beach voley. One of the most notable is **Luciana Aymar**, a field hockey player who is considered one of the greatest female players of all time.



Suggested date

March 2027 (Fall), start of the harvest. In the month proposed, it is possible to observe the advance of soybeans flowing from the fields to exporting ports and crushing plants.



Easy and quick access from the most important cities in the country and from other Mercosur countries, a wide variety of hotels and international standardized premises, the amenities and services typical of a big city, and the joint management of public and private sectors together support Rosario as one of the main centers for national conferences and conventions.

The city provides a broad range of venues suitable for a variety of events, from small meetings to big international fairs. There is hotel accommodation for more than 8,500 visitors, and the hotel industry is expanding steadily, with new hotels about to open and new projects under way.

Most importantly, Rosario is a welcoming city. Its migrational origins and its commercial and port-related development have given way to a cosmopolitan culture that all visitors find warm and friendly. Rosario offers top-level infrastructure, logistics, and professionals to host all type of events.



Conference facilities

Metropolitan Center has recently doubled the dimensions and the possibilities for events, exhibitions, congresses and large shows multiplied: 2.473 m² were added to the space inaugurated in 2007, to reach about 5,000 m² with capacity to accommodate almost 10,000 people. Both the structure and its equipment grant versatility to the whole of the proposal, becoming a place of innumerable possibilities. Furthermore, the Center has a careful acoustic treatment, structural elements that allow organizing the space in different ways, ease and speed in the main entrance/exit, technology and security. Different activities can be carried out in simultaneous, including multitudinous concerts and shows with large stage or stage structures.

Historic Center

In just a few steps, a tour through the buildings that summarize a great part of the history of the city.

Born in the 18th century as the small rural village of "Pago de los Arroyos", and recognized as "Illustrious and Faithful Villa" in 1823, Rosario became a city in 1852, starting a period of booming growth. Nowadays, a summary of that past can be toured through the emblematic buildings that stand around 25 de Mayo square (Main Square).

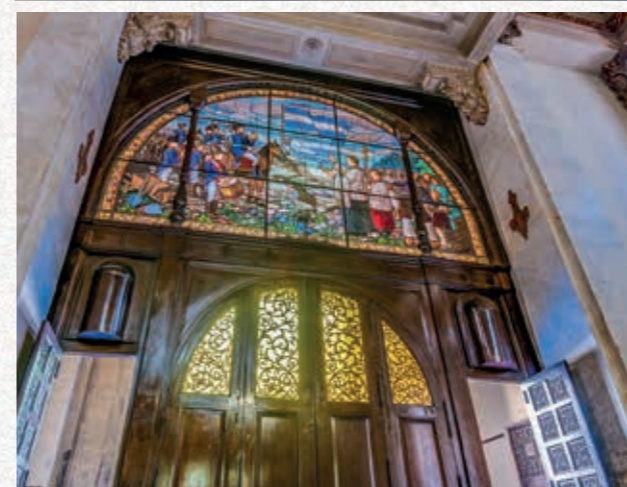
Main Cathedral

Built on the grounds of the chapel that gave spiritual aid to the first inhabitants. Before the Cathedral was built, here stood the first chapel of the urban settlement known as "Pago de los Arroyos". In 1731, the parish books were started with the first baptism. Hence, two images of the Holy Virgin were sent from Santa Fe: one of the Holy Conception, and the other of the Holy Rosary. The latter was kept here, and it gave name to the city. The present temple was built during the 19th Century. Its outstanding characteristics are the Altar built in Italy in two different tones of Carrara marble, the frescos in the Central Nave, and the bas-reliefs depicting the Stations of the Cross. In the basement, is located the Virgin's Room, with an image of the Virgin of the Holy Rosary, brought from Cádiz in 1773.

National Flag Memorial

Greatest landmark of the city, close to the river and the historic center. When you arrive here, you arrive to Rosario.

It stands on the site in which, in 1812, Manuel Belgrano hoisted the Argentine Flag for the first time. This 12,000 ft² memorial made of travertine marble represents the Argentine Nation in terms of a ship cutting through the waters of eternity. Its sections and details symbolize the Nation's historical milestones.



Juramento Walk

It is the link with the historic center of Rosario through a shallow fountain with statues by Lola Mora.

This walk, built in 1996, it is flanked by a fountain with different levels with statues sculpted from Carrara marble in Rome by artist Lola Mora. After they were sent from Italy, the sculptures were kept in 25 de Mayo square for many years and then in various sites in the city. Finally, when Juramento Walk was opened on February 27th, 1999, the sculptures were set on the place for which they had originally been created. She was a renowned sculptor born in the Province of Tucumán and a prominent exponent of Argentine culture.

Propylaeum

It symbolizes the Nation legally organized by the 1853 Constitution. The external walls of the Triumphal Propylaeum show verses from the National Anthem. At its center stands the urn with the remains of the Unknown Soldier who fought next to San Martín in the Battle of San Lorenzo, whereas the Votive Flame never goes out in homage to those who gave their lives for their country. In the lateral galleries of the Propylaeum there are sculptures that represent The Great Americas in its four stages: Indigenous Americas, Colonial Americas, Constitutional Americas, and Future Americas.

Flags gallery

The Gallery of Honor for the Flags represents the fraternity among the free nations of the Americas. It houses all the official symbols from the countries that compose the Organization of American States: National Flag, Emblem, Anthem and Flower. The Argentine Flag is the one that represented the country in the Malvinas War in 1982. The Gallery also houses the National Symbols of Italy and Spain, countries of origin of the majority of the immigrants that arrived in Rosario. Next to the Gallery, the Antarctica Room honors those who reasserted our sovereignty in the Antarctic continent.



Civic courtyard

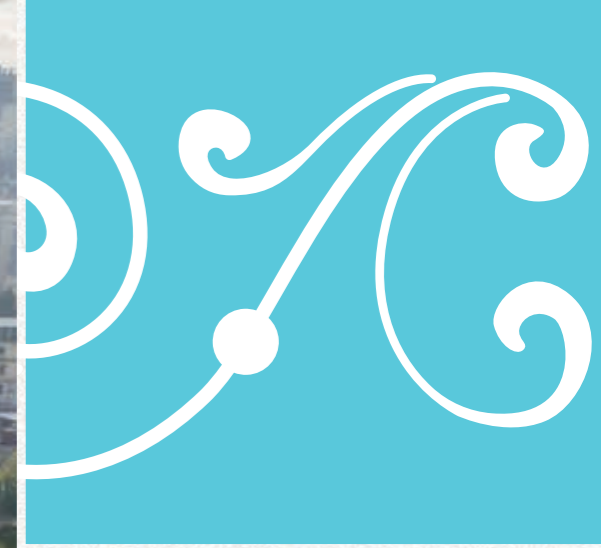
Its magnificent staircase represents the patriots' efforts to organize the State. It starts at the atrium, with the statue of the Mother Nation and goes up to the Propylaeum through a staircase that symbolizes the obstacles faced by the post-1810 generations in the organization of the Argentine society: wars, conflicts, arguments, treaties. This area, flanked by 22 lamp-flagpoles with the Argentine flag, is the place chosen both, for small gatherings and great festivities and celebrations.

Bow: Tower and crypt

With a design, pointing to the river it symbolizes a ship sailing to the future. The 230-ft tower honors the heroic deeds of May 1810. On the exterior, the four cardinal points represent the horizons of the Nation, and its walls hold historical quotes from General Manuel Belgrano. At its base stands Belgrano's crypt, though his remains are kept at Santo Domingo Church, in Buenos Aires, following his express wish. Here is the entrance to the tower's viewpoint that offers a wonderful view of the city and the river.

National park

The National Flag Park is the natural framework of the National Flag Memorial. This riverside park is a venue for important recreational and cultural events. It is the site of the River Station, which offers river excursions, and drinks and gastronomy by the Paraná River. It also encompasses the Malvinas War Memorial that pays tribute to the heroes of the War. It contains a fountain with the figure of the Malvinas Islands. Next to it, a geographical milestone shows the distance between Rosario and Port Argentine (Port Stanley).

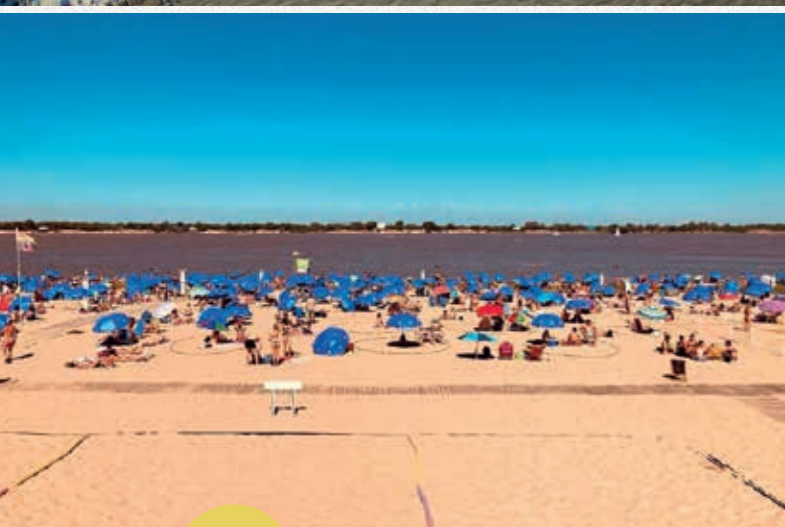


“La Florida” Beach

“La Florida” offers a wide variety of services in the northern riverside area. Visited by Rosario locals as of the late 19th century, it is the city’s most popular site during the summer. Its facilities (including utilities) were built in the 1940s, making this sandy beach a comfortable place for people to enjoy the sun and the river. Today, “La Florida” includes a beach, a soccer field, a volleyball court, lifeguard stands, a cleaning service, private security, a covered parking lot and bar.

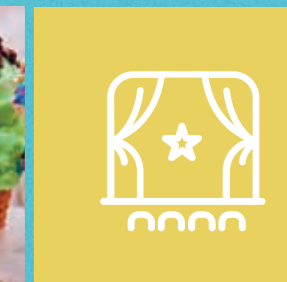
Casino

City Center Rosario is an impressive complex located at the city’s entrance. Regarded as the most modern entertainment center in Latin America, it includes a three-story casino (with more than 2,000 slot machines and 80 game tables), a good variety of restaurants and a five-star hotel.



In recent years, Rosario has experienced a boom in quality and diversity gastronomy, positioning an offer that combines creativity and innovation with traditional flavors. The city offers a diverse gastronomy scene with many options for both local and international cuisine and is known for its variety of fresh river fish such as bogas, paties, and surubies.

The traditional food, also known as Criolla, consists of large barbecues called 'asados' or 'parillas' on which meat (mainly beef), sausages, and black pudding are cooked. Is also the national capital of artisanal ice cream. Rosario, has a variety of cultural offerings such as concerts, theater performances, festivals, and workshops.



Accommodation

Rosario offers 10,000 hotel beds in a wide variety of accommodation options that include 2to 5-Stars Hotels, Apartments, Boutique Hotels, Hostels and Apartments for Temporary lease.

2	Five Stars Hotels	700 beds
16	Four Stars Hotels	3204 beds
8	Three Stars Hotels	976 beds
7	Two Stars Hotels	657 beds
3	One Star Hotels	125 beds
5	Apartment Hotels	476 beds
	Hotels	650 beds

Conventions Centers

Rosario offers top-level infrastructure, logistics, and professionals to host all type of events.





Land Access

As previously mentioned, Rosario has good connections in all directions, with a highway to the South, towards **Buenos Aires**, the country's capital city, another one to the North towards **Santa Fe**, the provincial capital city, and a third one to the Northwest to **Cordoba**.

Air Access

Rosario International Airport (AIR)

Rosario has a renovated international airport, 15 km from northwest from the city center (40 min by car). It can be accessed by two different roads: National Road 9 and Jorge Newbery Ave., both linked to the city by Circunvalación Ave. (Ring Road). Rosario International Airport also offers direct flights to different international destinations such as Panamá, San Pablo and Río de Janeiro.

The following airline companies operate domestic and international flights at the airport of Rosario.

www.aeropuertorosario.com

AEROLINEAS ARGENTINAS

with direct flights to the main cities and tourist destinations of the country: Aeroparque, Bariloche, Ezeiza, Iguazú, Mendoza, Salta and connections to destinations in the country and the world.

- **Buenos Aires:** from Monday to Sunday (Jorge Newbery Airport) – Tuesday, Thursday, Wednesday and Saturday (Ezeiza International Airport)
- **Bariloche:** Tuesday, Thursday, Saturday and Sunday
- **Salta:** Tuesday, Thursday, Wednesday and Saturday
- **Iguazu:** Monday, Thursday and Sunday
- **Mendoza:** Monday, Wednesday, Saturday and Sunday

COPA AIRLINES

Panamá and connections to destinations in the country and the world.

- **Panamá:** Monday, Tuesday, Wednesday, Friday, Saturday and Sunday

GOL AIRLINES

Rio de Janeiro, São Paulo and connections to destinations in the country and the world.

- **Río de Janeiro:** Wednesday, Friday, Sunday
- **San Pablo:** Tuesday, Thursday and Saturday.

LÍNEA AÉREA DEL ESTADO

Reconquista.

- **Reconquista:** biweekly Tuesday.

WSRC XII 2027

Suggested Program

BUSINESS & LEGAL

SESSION: COUNTRY REPORTS

- Update on the situation of soybean complex in countries that produce, export and import soybeans, its by-products and industrial products.
- Evaluating the use of new technologies, innovations, and limiting factors on the production and access to international markets.

SESSION: SOYBEAN BIOECONOMY: A VISION TO 2040

- Worldwide review on crushing industry and byproducts.
- International, regional and bilateral agreements: Their impact on soybean bioeconomy.
- Food safety. Soy value-added products for forage and human consumption.
- Investments in the soy industry by region until 2040.
- Impact on employment and community development.

SESSION: COMPETITIVENESS OF THE SOYBEAN CHAIN: LOGISTICS

- Soybean chain competitiveness in producing countries.
- Strategies for keeping on with a sustainable production, achieving our objectives against the carbon footprint and climate change.
- Logistics improvement in the southern cone to meet the global demand.

SESSION: GRAIN MARKETING, CHALLENGES AND PROPOSALS

- Commercial tools by countries. A comparison at the farmers, cooperators and exporters' level.
- Importance of institutional markets in price determination as a balance factor in negotiations between supply and demand.
- New policies and regulatory aspects adaptation.

SOYBEAN GERMPLASM AND BREEDING

SESSION: SOYBEAN GERMPLASM: CHARACTERIZATION, UTILIZATION, DISSEMINATION AND DOMESTICATION.

- Global strategies to evaluate germplasm for new plant breeding needs.
- Contribution of exotic germplasm in successful breeding programs.
- Impact of international legislations on genetic resources in the flow of soybean germplasm.
- Impact and contribution of national breeding programs to the wide world.
- Phenotyping: Robotics, computing and drones in plant breeding.

SESSION: BREEDING FOR BIOTIC AND ABIOTIC STRESS

- Progress in the selection of favorable traits against global climate change.
- Genetic improvement for Asian soybean rust after 20 years in the Mercosur.
- Molecular approaches in breeding for disease resistant in soybean.
- Targeting physiological traits for drought and salt tolerance.
- Contribution of the new breeding techniques (NBT) in improving germplasm against biotic and abiotic stress.

SESSION: BREEDING FOR SEED COMPOSITION

- Biotechnology approaches to improve soybean composition.
- Breeding soybean for more balanced oils for human food.
- Future of plant breeding for specific industrial oils.
- Improving soybean protein composition for different uses.

SESSION: GENOMICS IN SOYBEAN BREEDING

- Strategies of genomic selection in soybean breeding.
- Overview on genomic selection (GS) vs crossbreeding.
- More valuable genetic prediction considering GXE interactions.
- The role of bioinformatics in soybean functional genomics.
- Gene editing technology update.

WEEDS, DISEASE & PESTS

SESSION: ADVANCES AND CHALLENGES IN THE MANAGEMENT OF SOYBEAN DISEASES AND NEMATODES

- New scenarios and challenges proposed by the biological dynamics of diseases and nematodes.
- New strategies to reduce the economic impact of limiting factors of biotic origin.
- Studies about host-pathogen interaction for Asian soybean rust and other important diseases.
- Advances in breeding and management strategies for Asian soybean rust.
- Private and institutional actions in order to reduce the negative impact of Asian soybean rust.
- Strategies for the control and reduction of damage caused by nematodes.
- Effect of climate change on endemic and emerging plant pathogens.

SESSION: HERBICIDE RESISTANT WEEDS, CROPS AND GENES ROTATION.

- Update on the growing problem of herbicide resistance in weed control in soybean.
- Characteristics of the situation in different countries, analyzing both technical aspects and the integration of various players, researchers, industry and producers, to coordinate concrete actions to guarantee a sustainable production.
- Investments in the development of new modes of action in herbicides.
- New biotechnological events and their impact on sustainable weed control.

AGRONOMY & PHYSIOLOGY

SESSION: SOYBEAN NUTRITION STRATEGIES, FERTILIZERS, INOCULANTS AND THEIR INTERACTION WITH CROP MANAGEMENT

- News and challenges in the study of soybean physiology.
- New formulations and commercial applications.
- Microgranular soil fertilizers.
- Use of phosphorus solubilizing bacteria.
- Outlook of the use of bioinputs in soybean agriculture.
- Discussion on foliar nutrition based on formulations that include plant hormones, growth regulators and photosynthesis activators.
- Biotechnology applied to nitrogen-fixation bacteria and its use to develop new commercial inoculants.

SESSION: SOYBEAN PLANT AND CROP PHYSIOLOGY

- Insight related to physiological causes of yield gap
- Physiological traits for drought, salt tolerance, waterlogging, seed quality and seed yield.
- Physiological behavior of soybean facing the climate changes.
- Managing developmental factors in speed breeding programs
- Physiology of canopy architecture and lodging resistance
- Physiology of seed production, quality and technology

SESSION: MECHANIZATION AND PRECISION AGRICULTURE

- Technology advances in the practical application of precision agriculture new tools in soybean production.
- Managing big data information.
- New equipment to improve efficiency and safety in pesticide applications.
- New technological challenges in soybean planting.
- Technological advances to improve harvest procedures.

SESSION: MANAGEMENT PRACTICES, MATURITY GROUPS AND PLANTING DATES

- Choice of cultivar according to the interaction G/E interaction.
- Progress made in the knowledge of the impact of temperature, radiation, and water availability on the performance of soybean crops and its quality.
- Analysis of the type of variety that uses more efficiently the factors of the environment such as radiation and water.

FOOD, FEED & NUTRITION

SESSION: ALTERNATIVE USES OF SOYBEAN

- Physicochemical properties of soybean foods from different soybean materials.
- Soybean use in animal feed and its possibilities.
- Sustainable aquaculture with the use of soy.
- Advances in process technology and protein products derived from soybean.
- The future of genetic modification of soybean to add value to its production.
- New products derived from innovative production processes.

SESSION: SOYBEAN AND HEALTH: USES, HUMAN CONSUMPTION, INDUSTRY AND FOOD

- What needs the consumer from our soybeans?
- Benefits of soybean in a healthy diet.
- Nutraceutical value and its effect on lipid composition of different types of meat.
- Processing soybean foods to retain solid, protein, off-flavor compound, isoflavones, phenolic substance and antioxidant.
- Functional properties of fermented and non-fermented soybean foods.
- Effects of different processes of soymilk on protein properties.

SESSION: SOYBEAN PRODUCTS QUALITY

- Impact of the new requirements from international markets on the presence of contaminants in the grain and soy by-products.
- Pesticide residues, commercial standards and LLP (low level presence of GMO's).
- Need to activate the interchange of information and to generate transparent international agreements.

SPECIALS

WORKSHOP ON NATURAL RESOURCES: SUSTAINABILITY

- Better agricultural practices and their harmonization.
- Certifying agriculture and the entire soybean industrialization process.
- Need to obtain reliable data by studying and monitoring the sustainability of soybean and their by-products.
- Joint strategy of scientists, academics, government agents and institutions to obtain valid sustainability indicators (carbon footprint, water footprint, environmental index, and others).
- Analyses of the impact of no-till agriculture in the Mercosur countries where the technology is widely adopted.

WORKSHOP ON AGRICLIMATIC RISK MANAGEMENT IN SOYBEAN PRODUCTION

- Global climate change (GCC) and its impact on soybean production around the world.
- Determination of the most vulnerable regions for sustainable soy production and the tools to reduce the impact of intensive agriculture.
- Determining risk aspects and directing research and genetic improvement to mitigate the effects of the GCC and opportunities.
- Overview on agricultural insurance as part of public policies and its interaction with the private sector.

WORKSHOP ON ADOPTION OF GMOs AND NBT'S.

- Positive and negative impacts of the introduction of GMO soybean in different regions.
- Comparative view on the situation of GMO crops, intellectual property and value addition in major producing countries.
- Public perception on GMOs and strategies for communicating to the general public.
- Analysis of the regulations in different countries and international treaties. Solutions to avoid asynchronies in GMO approvals.
- Real needs and commercial opportunities.
- Coexistence between regulated and Non-GMO products that favor the supply of food in the markets.

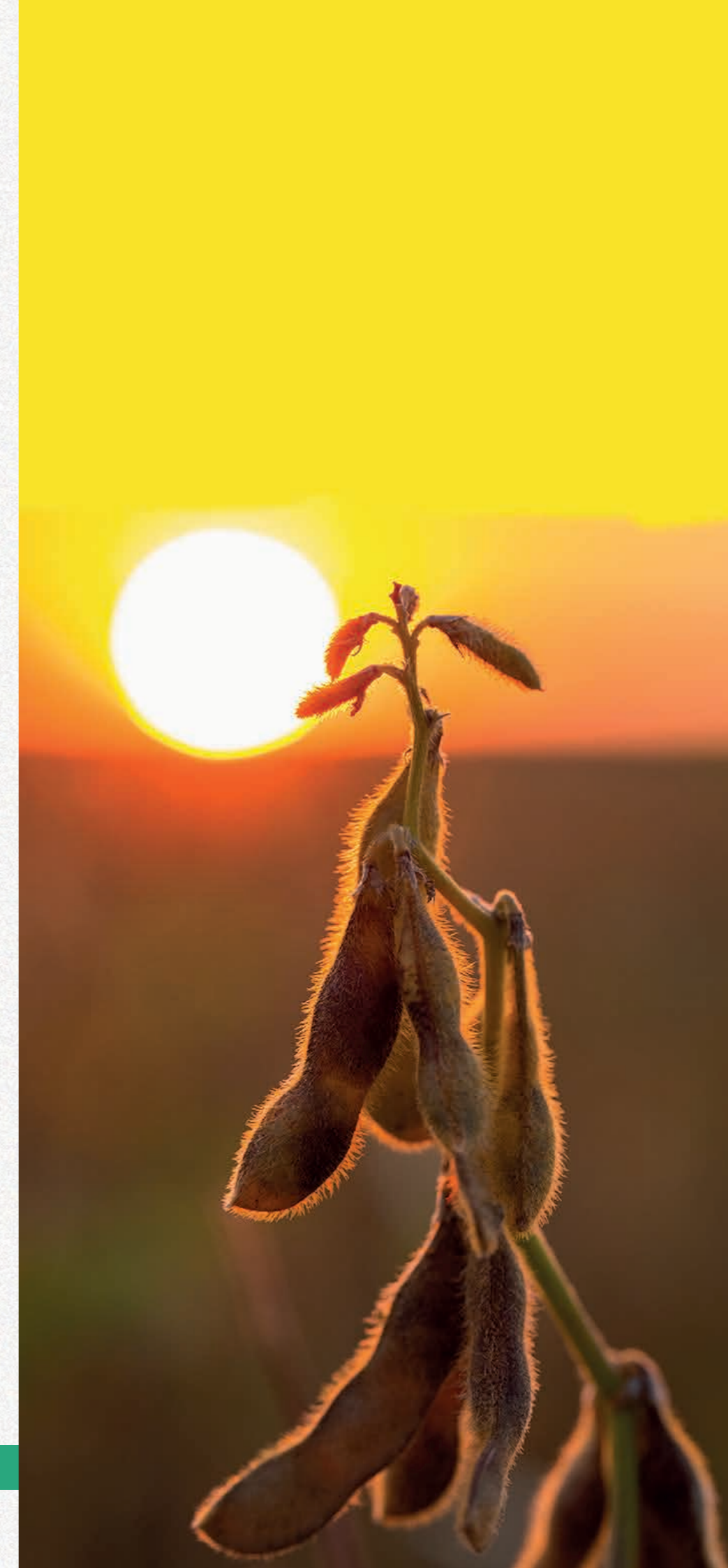
WORKSHOP ON SEED PRODUCTION AND SEED PRODUCTION TECHNOLOGY

- Modern good practices in soybean seed management to obtain the best quality in limiting environments.
- Innovation in the equipment and process to obtain the best quality soybean seed.
- Physiology of the seed and its interaction with difficult environments.
- Plant handling, drying and storage.
- Important diseases affecting the soybean seed and application of seed treatments for their control.

WORKSHOP ON HUMAN RESOURCES: INVESTING IN TRAINING TO MEET THE CHALLENGE OF LEADING FOOD PRODUCTION FOR THE WORLD

- Public and private view about education in agriculture.
- Preparing human resources for the new jobs of the future.
- Academic training for the seed industry.

AGRICULTURE INNOVATION: AGTECH. MEETUPS STARTUPS - COMPANIES- FARMERS.



INDUSTRY AND FIELD TOUR



Day 1

Visit INTA Pergamino. Research station in the morning, quick lunch and continue to Venado Tuerto for a visit to DEMO SOJA.

- Miro park - 3 stars.
- BH boutique - 3 stars.
- El Molino - 3 stars.
- Hotel Casino & Resort de Melincue- 4 stars.

Day 2

Visit INTA Marco Juarez Research Station, lunch. Rosario- visit INDEAR. Hotel in Rosario.

Day 3

Visit Rosario Board of trade and agro-industrial complex in the morning.

River tour - crushing industry facilities.

While on the road, different experts will provide details about farming in Argentina.



WSRC IV 1989



In 1989, the IV World Conference on Soybean Research was held for the first time outside the United States of America.

On a historic occasion, the venue was Argentina. From March 5 to 9, 1989 a world-renowned scientific event was held at the Sheraton Hotel in Buenos Aires, with foreign and national personalities participating in the Conference.

The Argentine Soybean Chain Association was not yet formally constituted.

The organization was in charge of the "Argentine Soybean Association", ACSOJA's precursor, formed by the same group of scientists and technicians, most of whom collaborate now with this proposal. It was a successful Conference that brought together hundreds of professionals from various continents.

The presence in the meetings and in the technical tour of the soybean pioneers, Doctors E. Hartwig, J. Wilcox, C. Caviness, R. Bernard, K. Hinson, among others, was among the highlights of WSRC IV 1989.

ACSOJA has organized international events such as

- **2019 Mercosoja** (Seventh Mercosur Soybean Congress) – September 04 to 05, 2019, Convention Center of the Rosario Board of Trade, city of Rosario, province of Santa Fe, Argentina.
- **2011 Mercosoja** (Fifth Mercosur Soybean Congress) – First Asia-Mercosur Soybean Forum – September 14 to 16, 2011, Convention Center of the Rosario Board of Trade, city of Rosario, province of Santa Fe, Argentina.
- **2007 Rosario Global Bioenergy Forum** – September 7 to 9, 2007, Convention Center of the Rosario Board of Trade, city of Rosario, province of Santa Fe, Argentina.
- **2006 Mercosoja** (Third Mercosur Soybean Congress) – June 27 to 30, 2006, Convention Center of the Rosario Board of Trade, city of Rosario, province of Santa Fe, Argentina.

Organizing Committee: ACSOJA Board of Directors.

- ◆ **President: Rodolfo Rossi**
(Association of Soybean Breeders and Researchers- PROSOJA)
Science & Technology
- ◆ **Vice President: Ricardo Bergmann**
(Argentine Association of Regional Farming Experimentation
Consortia - AACREA)
Production
- ◆ **Secretary: Luciano Durand**
(Rosario Brokers Center)
Commercialization
- ◆ **Deputy Secretary: Gabriel Caterina**
(College of Agronomist Engineers of the Province
of Santa Fe - CIASFE)
Services
- ◆ **Treasurer: Luis Zubizarreta**
(Chamber of the Argentine Oil Industry - CIARA)
Industrialization and Uses
- ◆ **Deputy Treasurer: Armando Allinghi**
(Chamber of the Argentine Fertilizers and
Agrochemicals Industry - CIAFA)
Agricultural Inputs suppliers

Scientific Committee

Members of the following entities:

INTA, UNR, PROSOJA, EEAOC and UBA.

Consultants and Technicians chosen from local public and private activity.

Advisory Committee

Elected from foreign and local referents.



Approaches to get sponsorship to support the conference

Based on ACSOJA's experience in organizing national and international events and the support obtained in those occasions by the main companies in the sector and from different national and local organisms, we understand that they will also be very interested in being part of the World Conference.

This is supported also by the fact that soybean is the center of one of the most relevant complexes of the Argentine economy, contributing to the export of food and energy within a framework of sustainability, competitiveness and value added creation.

Letters of support from local organizations, municipalities, state and federal governments as required

NOTA S. P. N.º 9/2023
Buenos Aires, 04 de abril de 2023

Señores
Continuing Committee of the
X World Soybean Research Conference
At. Mr. Ricardo Vilela Abdelnoor

De nuestra mayor consideración:

Tenemos el agrado de dirigimos a Ud., a fin de expresar nuestro total apoyo a la postulación de ACSOJA como organizadora de la próxima edición del XII World Soybean Research Conference que se llevará a cabo en 2027.

Argentina ha vivido un importante desarrollo en la actividad sojera en las últimas décadas que transformó el sector agroindustrial posicionándolo entre los primeros productores del mundo. Este crecimiento se ha traducido no sólo en el incremento de la superficie sembrada sino que también ha impulsado el desarrollo de la estructura industrial para la elaboración de aceites y harinas con participación en el mercado internacional de estos productos, incentivando la inversión y aplicación de las más altas tecnologías en la industria local.

Argentina posee un polo de crushing de soja único en el mundo con una capacidad de procesamiento diario de 207.000 toneladas por día a nivel nacional, de los cuales el 80% se encuentran en la zona de Rosario y en la provincia de Santa Fe.

En Rosario y su región se concentra un polo de desarrollo en Biotecnología (INDEAR), las estaciones experimentales de INTA más importantes y empresas dedicadas a la investigación en todas las etapas de la cadena.

Sin dudas, la soja es hoy la principal oleaginosa del país, y junto a sus derivados, el principal producto de exportación argentino.

La Asociación de la Cadena de la Soja Argentina (ACSOJA), tiene su sede en Rosario, dónde opera una de las más importantes Bolsas de Comercio del país, la Bolsa de Comercio de Rosario, con el mayor volumen de comercialización de la región.

Secretaría de Agricultura, Ganadería y Pesca
Ministerio de Economía Argentina

UBA
Universidad de Buenos Aires

UBA AGRONOMÍA
Facultad de Agronomía

Buenos Aires, April 2023.

Dr. Ricardo Vilela Abdelnoor
Chairman WSRC Continuing Committee

Dear Sirs:

We are pleased to write to you in order to express our full support for ACSOJA's nomination as organizer of the next edition of the XII World Soybean Research Conference that will take place in 2027.

Argentina has experienced an important development in the soybean activity in the last decades that has transformed the agro-industrial sector. The country is currently one of the most influential producers worldwide. Not only soybean acreage has expanded, but there has also been a substantial development of the industrial facilities, to produce meal and oils for export. The global demand has led to high investments and high-tech solutions.

As we have already expressed Argentina has a unique soybean crushing pole in the world with a daily processing capacity of 207,000 tons per day, of which 80% are located in the Rosario area and in the province of Santa Fe. Undoubtedly, soybeans are today the country's main oilseed, and together with its by-products, the main Argentine export product.

ACSOJA has large experience in holding international events; encouraging and promoting research in different areas such as scientific-technical ones as well as in production and industry always with the continuous support of School of Agriculture of the University of Buenos Aires.

Taking into account ACSOJA's knowledge, and base on the relevance of Argentina in the soybean world market we strongly recommend considering our country and the Association to host the XII World Conference on Soy Research 2027.

Your sincerely,

Dean
School of Agriculture
University of Buenos Aires

Dr. Ricardo Vilela Abdelnoor
Chairman WSRC Continuing Committee

Dear Sirs:

We are pleased to write to you in order to express our full support for ACSOJA's nomination as organizer of the next edition of the XII World Soybean Research Conference that will take place in 2027.

Argentina has experienced an important development in the soybean activity in the last decades that has transformed the agro-industrial sector. The country is currently one of the most influential producers worldwide. Not only soybean acreage has expanded, but there has also been a substantial development of the industrial facilities, to produce meal and oils for export. The global demand has led to high investments and high-tech solutions.

As we have already expressed Argentina has a unique soybean crushing pole in the world with a daily processing capacity of 207,000 tons per day, of which 80% are located in the Rosario area and in the province of Santa Fe. Undoubtedly, soybeans are today the country's main oilseed, and together with its by-products, the main Argentine export product.

ACSOJA has large experience in holding international events; encouraging and promoting research in different areas such as scientific-technical ones as well as in production and industry always with the continuous support of GOBIERNO DE LA PROVINCIA DE SANTA FE.

Taking into account ACSOJA's knowledge, and base on the relevance of Argentina in the soybean world market we strongly recommend considering our country and the Association to host the XII World Conference on Soy Research 2027.

Your sincerely,

CPN OMAR ÁNGEL PEROTTI
GOBERNADOR DE LA PROVINCIA DE SANTA FE

Rosario, April 2023.

Dr. Ricardo Vilela Abdelnoor
Chairman WSRC Continuing Committee

Dear Sirs:

We are pleased to write to you in order to express our full support for ACSOJA's nomination as organizer of the next edition of the XII World Soybean Research Conference that will take place in 2027.

Argentina has experienced an important development in the soybean activity in the last decades that has transformed the agro-industrial sector. The country is currently one of the most influential producers worldwide. Not only soybean acreage has expanded, but there has also been a substantial development of the industrial facilities, to produce meal and oils for export. The global demand has led to high investments and high-tech solutions.

As we have already expressed Argentina has a unique soybean crushing pole in the world with a daily processing capacity of 207,000 tons per day, of which 80% are located in the Rosario area and in the province of Santa Fe. Undoubtedly, soybeans are today the country's main oilseed, and together with its by-products, the main Argentine export product.

ACSOJA has large experience in holding international events; encouraging and promoting research in different areas such as scientific-technical ones as well as in production and industry always with the continuous support of the Municipality of Rosario.

Taking into account ACSOJA's knowledge, and base on the relevance of Argentina in the soybean world market we strongly recommend considering our country and the Association to host the XII World Conference on Soy Research 2027.

Your sincerely,

Dr. PABLO ZAVKIN
INTENDENTE
Municipalidad de Rosario

CPIA
Comisión Provincial de Ingeniería Agronómica

Rosario, April 2023.

Chairman WSRC Continuing Committee

Dear Sirs:

We are pleased to write to you in order to express our full support for ACSOJA's nomination as organizer of the next edition of the XII World Soybean Research Conference that will take place in 2027.

Argentina has experienced an important development in the soybean activity in the last decades that has transformed the agro-industrial sector. The country is currently one of the most influential producers worldwide. Not only soybean acreage has expanded, but there has also been a substantial development of the industrial facilities, to produce meal and oils for export. The global demand has led to high investments and high-tech solutions.

As we have already expressed Argentina has a unique soybean crushing pole in the world with a daily processing capacity of 207,000 tons per day, of which 80% are located in the Rosario area and in the province of Santa Fe. Undoubtedly, soybeans are today the country's main oilseed, and together with its by-products, the main Argentine export product.

ACSOJA has large experience in holding international events; encouraging and promoting research in different areas such as scientific-technical ones as well as in production and industry always with the continuous support of Consejo Profesional de Ingeniería Agronómica (CPIA).

Taking into account ACSOJA's knowledge, and base on the relevance of Argentina in the soybean world market we strongly recommend considering our country and the Association to host the XII World Conference on Soy Research 2027.

Your sincerely,

INFORME
Presidencia

Buenos Aires, April 14, 2023.

Dr. Ricardo Vilela Abdelnoor
Chairman WSRC Continuing Committee
XII World Soybean Research Conference

I am pleased to contact you to highlight the interest of Argentina to host the XII World Soybean Research Conference in Argentina in 2027.

Argentina is an excellent option to host the XII World Soybean Research Conference that will take place in 2027, thus generating a notable impulse for the development and strengthening of the subject and in the same way, for the training and formation of professionals from our country and from the entire American continent.

Argentina has experienced an important development in the soybean activity in the last decades that has transformed the agro-industrial sector. The country is currently one of the most influential producers worldwide. Not only soybean acreage has expanded, but there has also been a substantial development of the industrial facilities, to produce meal and oils for export. The global demand has led to high investments and high-tech solutions.

As we have already expressed Argentina has a unique soybean crushing pole in the world with a daily processing capacity of 207,000 tons per day.

Year after year, Argentina hosts international events of all kinds, such as congresses, conventions, exhibitions, seminars and other academic activities, whose professionals choose our destinations to host their meetings. Due to hard work done, our country has reached the 18th position in global ranking made by the International Association of Congresses and Conventions (ICCA).

Our country is the perfect destination to organize important events such as the G20 Summit, the Assembly of Inter-American Development Bank (IDB), the World Dental Congress, the Youth Olympic Games, World Travel & Tourism Council Summit, among others.

In addition, those delegates who participate in this Congress will be able to visit a magnificent country, Argentina is the 8th largest in the world, which offers six contrasting regions where you can enjoy unique experiences, such as the Iguazu Falls, the Glaciers, the Andes Mountain Range, the Jesuit Heritage, salt deserts, vineyards, and even more. They will enjoy our rich culture, influenced by native and European traditions, which can be defined through some cultural icons such as Tango, our wines & gastronomy and, above all, our people.

Considering all the facts mentioned above, we would be honored to host the XII World Soybean Research Conference in Argentina.

I look forward to work together in the near future and collaborate on this initiative.

Yours sincerely,

Ricardo Rubén
EXECUTIVE SECRETARY
ARGENTINA NATIONAL INSTITUTE



"1983/2023 - 40 AÑOS DE DEMOCRACIA"

Nota p N° 15

Buenos Aires, April 2023.

Dr. Ricardo Vilela Abdelnoor
Chairman WSRC Continuing Committee

Dear Sirs:

We are pleased to write to you in order to express our full support for ACSOJA's nomination as organizer of the next edition of the XII World Soybean Research Conference that will take place in 2027.

Argentina has experienced an important development in the soybean activity in the last decades that has transformed the agro-industrial sector. The country is currently one of the most influential producers worldwide. Not only soybean acreage has expanded, but there has also been a substantial development of the industrial facilities, to produce meal and oils for export. The global demand has led to high investments and high-tech solutions.

As we have already expressed Argentina has a unique soybean crushing pole in the world with a daily processing capacity of 207,000 tons per day, of which 80% are located in the Rosario area and in the province of Santa Fe. Undoubtedly, soybeans are today the country's main oilseed, and together with its by-products, the main Argentine export product.

ACSOJA has large experience in holding international events; encouraging and promoting research in different areas such as scientific-technical ones as well as in production and industry always with the continuous support of national institute of agricultural technology - INTA.

Taking into account ACSOJA's knowledge, and base on the relevance of Argentina in the soybean world market we strongly recommend considering our country and the Association to host the XII World Conference on Soy Research 2027.

Your sincerely,

Córdoba, April 2023.

Dr. Ricardo Vilela Abdelnoor
Chairman WSRC Continuing Committee

Dear Sirs:

We are pleased to write to you in order to express our full support for ACSOJA's nomination as organizer of the next edition of the XII World Soybean Research Conference that will take place in 2027.

Argentina has experienced an important development in the soybean activity in the last decades that has transformed the agro-industrial sector. The country is currently one of the most influential producers worldwide. Not only soybean acreage has expanded, but there has also been a substantial development of the industrial facilities, to produce meal and oils for export. The global demand has led to high investments and high-tech solutions.

As we have already expressed Argentina has a unique soybean crushing pole in the world with a daily processing capacity of 207,000 tons per day, of which 80% are located in the Rosario area and in the province of Santa Fe. Undoubtedly, soybeans are today the country's main oilseed, and together with its by-products, the main Argentine export product.

ACSOJA has large experience in holding international events; encouraging and promoting research in different areas such as scientific-technical ones as well as in production and industry always with the continuous support of COLEGIO DE INGENIEROS AGRONOMOS DE LA PROVINCIA DE CORDOBA

Taking into account ACSOJA's knowledge, and base on the relevance of Argentina in the soybean world market we strongly recommend considering our country and the Association to host the XII World Conference on Soy Research 2027.

Your sincerely,

Ing. Agr.

UNR
Universidad
Nacional
de Rosario

FACULTAD DE CIENCIAS AGRARIAS
"1983/2023 - 40 AÑOS DE DEMOCRACIA"

Rosario, April 2023.

Dr. Ricardo Vilela Abdelnoor
Chairman WSRC Continuing Committee

Dear Sirs:

We are pleased to write to you in order to express our full support for ACSOJA's nomination as organizer of the next edition of the XII World Soybean Research Conference that will take place in 2027.

Argentina has experienced an important development in the soybean activity in the last decades that has transformed the agro-industrial sector. The country is currently one of the most influential producers worldwide. Not only soybean acreage has expanded, but there has also been a substantial development of the industrial facilities, to produce meal and oils for export. The global demand has led to high investments and high-tech solutions.

As we have already expressed Argentina has a unique soybean crushing pole in the world with a daily processing capacity of 207,000 tons per day, of which 80% are located in the Rosario area and in the province of Santa Fe. Undoubtedly, soybeans are today the country's main oilseed, and together with its by-products, the main Argentine export product.

ACSOJA has large experience in holding international events; encouraging and promoting research in different areas such as scientific-technical ones as well as in production and industry always with the continuous support of Facultad de Ciencias Agrarias (UNR).

Taking into account ACSOJA's knowledge, and base on the relevance of Argentina in the soybean world market we strongly recommend considering our country and the Association to host the XII World Conference on Soy Research 2027.

Your sincerely,

Roberto E. López
Facultad Ciencias Agrarias (UNR)
Decano

Campo Experimental José E. Villarino
C.C. N° 14 (5212) 2544 Zavatta - Sta Fe - ARG.
Teléfono: 0341 497-0080 / 4970085
agro@unr.edu.ar | https://fcag.unr.edu.ar

Dr. Ricardo Vilela Abdelnoor
Chairman WSRC Continuing Committee

Dear Sirs:

We are pleased to write to you in order to express our full support for ACSOJA's nomination as organizer of the next edition of the XII World Soybean Research Conference that will take place in 2027.

Argentina has experienced an important development in the soybean activity in the last decades that has transformed the agro-industrial sector. The country is currently one of the most influential producers worldwide. Not only soybean acreage has expanded, but there has also been a substantial development of the industrial facilities, to produce meal and oils for export. The global demand has led to high investments and high-tech solutions.

As we have already expressed Argentina has a unique soybean crushing pole in the world with a daily processing capacity of 207,000 tons per day, of which 80% are located in the Rosario area and in the province of Santa Fe. Undoubtedly, soybeans are today the country's main oilseed, and together with its by-products, the main Argentine export product.

ACSOJA has large experience in holding international events; encouraging and promoting research in different areas such as scientific-technical ones as well as in production and industry always with the continuous support of BOLSA DE CEREALES DE ENTRE RÍOS.

Taking into account ACSOJA's knowledge, and base on the relevance of Argentina in the soybean world market we strongly recommend considering our country and the Association to host the XII World Conference on Soy Research 2027.

Your sincerely,

Rosario, April 2023.

Ciasfe
COLEGIO DE INGENIEROS AGRÓNOMOS
DE LA PROVINCIA DE SANTA FE
Ley 10.790 Enmienda adhibida a FADSA

Directorio Provincial

Santa Fe, April 2023.

Dr. Ricardo Vilela Abdelnoor
Chairman WSRC Continuing Committee

Dear Sirs:

We are pleased to write to you in order to express our full support for ACSOJA's nomination as organizer of the next edition of the XII World Soybean Research Conference that will take place in 2027.

Argentina has experienced an important development in the soybean activity in the last decades that has transformed the agro-industrial sector. The country is currently one of the most influential producers worldwide. Not only soybean acreage has expanded, but there has also been a substantial development of the industrial facilities, to produce meal and oils for export. The global demand has led to high investments and high-tech solutions.

As we have already expressed Argentina has a unique soybean crushing pole in the world with a daily processing capacity of 207,000 tons per day, of which 80% are located in the Rosario area and in the province of Santa Fe. Undoubtedly, soybeans are today the country's main oilseed, and together with its by-products, the main Argentine export product.

ACSOJA has large experience in holding international events; encouraging and promoting research in different areas such as scientific-technical ones as well as in production and industry always with the continuous support of College of Agricultural Engineers of Santa Fe, Argentina

Taking into account ACSOJA's knowledge, and base on the relevance of Argentina in the soybean world market we strongly recommend considering our country and the Association to host the XII World Conference on Soy Research 2027.

Your sincerely,

Ing. Agr. Carlos Carballo
Presidente
MP 82-3-0041

Presidente CIASFE

1° Ciro, Santa Fe
Tucumán
Av. Uruguay 1948
(0342) 4585729-84
ciasfe1@ciasfe1.org

2° Ciro, Rosario
Salto 2243
(0341) 4302950
ciasfe2@ciasfe2.org.ar

3a Ciro, Reconquista
Barrancas 1530
(03482) 424776
ciasfe3@reconquista.org.ar

4° Ciro, Venado
Barrancas 425
(03462) 431087
ciasfe4@venado.org.ar



Rosario, April 2023.

Dr. Ricardo Vilela Abdelnoor
Chairman WSRC Continuing Committee

Dear Sirs:

We are pleased to write to you in order to express our full support for ACSOJA's nomination as organizer of the next edition of the XII World Soybean Research Conference that will take place in 2027.

Argentina has experienced an important development in the soybean activity in the last decades that has transformed the agro-industrial sector. The country is currently one of the most influential producers worldwide. Not only soybean acreage has expanded, but there has also been a substantial development of the industrial facilities, to produce meal and oils for export. The global demand has led to high investments and high-tech solutions.

As we have already expressed Argentina has a unique soybean crushing pole in the world with a daily processing capacity of 207,000 tons per day, of which 80% are located in the Rosario area and in the province of Santa Fe. Undoubtedly, soybeans are today the country's main oilseed, and together with its by-products, the main Argentine export product.

ACSOJA has large experience in holding international events; encouraging and promoting research in different areas such as scientific-technical ones as well as in production and industry always with the continuous support of Bolsa de Cereales de Buenos Aires.

Taking into account ACSOJA's knowledge, and base on the relevance of Argentina in the soybean world market we strongly recommend considering our country and the Association to host the XII World Conference on Soy Research 2027.



Rosario, April 2023.

Dr. Ricardo Vilela Abdelnoor
Chairman WSRC Continuing Committee

Dear Sirs:

We are pleased to write to you in order to express our full support for ACSOJA's nomination as organizer of the next edition of the XII World Soybean Research Conference that will take place in 2027.

Argentina has experienced an important development in the soybean activity in the last decades that has transformed the agro-industrial sector. The country is currently one of the most influential producers worldwide. Not only soybean acreage has expanded, but there has also been a substantial development of the industrial facilities, to produce meal and oils for export. The global demand has led to high investments and high-tech solutions.

As we have already expressed Argentina has a unique soybean crushing pole in the world with a daily processing capacity of 207,000 tons per day, of which 80% are located in the Rosario area and in the province of Santa Fe. Undoubtedly, soybeans are today the country's main oilseed, and together with its by-products, the main Argentine export product.

ACSOJA has large experience in holding international events; encouraging and promoting research in different areas such as scientific-technical ones as well as in production and industry always with the continuous support of Bolsa de Cereales de Córdoba y Cámara de Cereales y Afines de Córdoba Arbitral.

Taking into account ACSOJA's knowledge, and base on the relevance of Argentina in the soybean world market we strongly recommend considering our country and the Association to host the XII World Conference on Soy Research 2027.

Your sincerely,

Cr. Erardo Gallo
Presidente
Bolsa de Cereales de Córdoba

www.bccba.org.ar



BOLSA DE COMERCIO DE ROSARIO

Rosario, April 4, 2023

Dear
Continuing Committee Members of the
X World Soybean Research Conference

Attn. Ricardo Vilela Abdelnoor

Dear Members,

We are writing to you to express our full support for ACSOJA's nomination as organizer of the next edition of the XII World Soybean Research Conference that will take place in 2027.

Argentina has experienced an outstanding development in soybean activity in the last decades that transformed the agro-industrial sector and positioned the country among the first producers in the world. This growth has resulted not only into an increase in the planted area but has also promoted the development of the oilseed crushing industry structure. The growing participation of Argentine soy products in the international trade encouraged investments and the application of the highest and newest technologies in the local industry.

Argentina has a unique soybean crushing hub with a daily processing capacity of 207,000 tons per day at national level, of which 80% is located in the area of Rosario. This is due to the proximity of the Gran Rosario port terminals to the main producing areas of the oilseed, a grain that, together with its derivatives, constitutes the main export complex of the country. Therefore, the Gran Rosario has found itself in the first place in the ranking of port nodes of the soybean complex worldwide.



Bolsa de Comercio de Santa Fe

Santa Fe, April 4th 2023

Dr. Ricardo Vilela Abdelnoor
Chairman WSRC Continuing Committee

Dear Sirs:

We are pleased to write to you in order to express our full support for ACSOJA's nomination as organizer of the next edition of the XII World Soybean Research Conference that will take place in 2027.

Argentina has experienced an important development of soybean activity in the last few decades that has transformed the agro-industrial sector. The country is currently one of the most influential producers worldwide. Not only soybean acreage expanded, but there has also been a substantial development of industrial facilities, to produce meal and oils for export. Global demand has led to high investment and high-tech solutions.

As we have already expressed, Argentina has a one-of-a-kind soybean crushing cluster in the world with a daily processing capacity of 207,000 tons, of which 80% are located in the Rosario area and in the province of Santa Fe. Undoubtedly, soybeans are today the country's main oilseed, and together with its by-products, the main Argentine export produce.

ACSOJA has large experience in holding international events; encouraging and promoting research in different areas such as scientific-technical ones as well as in production and industry always with the continuous support of Bolsa de Comercio de Santa Fe.

Taking into account ACSOJA's knowledge, and based on the relevance of Argentina in the soybean world market, we strongly recommend considering our country and the Association to host the XII World Conference on Soy Research 2027.

Your sincerely,

Martín Vigo Lamas
Presidente
Bolsa de Comercio de Santa Fe

San Martín 2231, Santa Fe / 0342 - 4845800 / www.bcsf.com.ar



Bolsa de Cereales de Bahía Blanca
El valor de la región

Rosario, April 2023

Dr. Ricardo Vilela Abdelnoor
Chairman WSRC Continuing Committee

Dear Sirs:

We are pleased to write to you to express our full support for ACSOJA's nomination as organizer of the next edition of the XII World Soybean Research Conference that will take place in 2027.

Argentina has experienced an important development in the soybean activity in the last decades transforming the agro-industrial sector. Our country is currently one of the most influential producers worldwide. Not only soybean acreage has expanded, but there has also been a substantial development of the industrial facilities, to produce meal and oils for export. The global demand has led to high investments and high-tech solutions.

As we have already expressed Argentina has a unique soybean crushing pole in the world with a daily processing capacity of 207,000 tons, 80% of which are located in the Rosario area and in the province of Santa Fe. Undoubtedly, soybeans are today the country's main oilseed, and together with its by-products, the main Argentine export product.

ACSOJA has large experience in holding international events, encouraging, and promoting research in different areas such as scientific-technical ones, as well as in production and industry, always with the continuous support of Bolsa de Cereales y Productos de Bahía Blanca.

Taking into account ACSOJA's knowledge and based on the relevance of Argentina in the soybean world market, we strongly recommend considering our country and the Association to host the XII World Conference on Soy Research 2027.

Your sincerely,

Alicia Ruppel
General Manager
y Productos de Bahía Blanca

+54 291 4559520 | +54 291 4519062



Dr. Ricardo Vilela Abdelnoor
Chairman WSRC Continuing Committee

Dear Dr. Abdelnoor,

On behalf of Estación Experimental Agroindustrial Obispo Colombres (EEAOC), I am pleased to write to you in order to express our full support for ACSOJA's nomination as organizer of the next edition of the World Soybean Research Conference that will take place in 2027.

As is well known, Argentina is the third largest soybean producing country in the world, accounting for 18% of the total production, and the world leading exporter of soybean derived products, such as oil and meal.

Our country has experienced an important development in the soybean activity in the last decades that has transformed the agro-industrial sector. Argentina is currently one of the most influential producers worldwide. Not only soybean area has expanded, but there has also been a substantial development of the industrial facilities, to produce meal and oils for export. The global demand has led to high investments and high-tech solutions.

As we have already expressed Argentina has a unique soybean crushing pole in the world with a daily processing capacity of 207,000 tons per day, of which 80% are located in the Rosario area and in the province of Santa Fe. Undoubtedly, soybeans are today the country's main oilseed, and together with its by-products, the main Argentine export product.

Our research institution is located in Northwestern Argentina (NWA), a region that includes five provinces (Catamarca, Jujuy, Salta, Santiago del Estero, and Tucumán). Although soybean is not the main crop in NWA, there are currently more than one million hectares with this crop in this region, in areas where few other alternatives are feasible, an achievement made possible by sustained scientific research and innovation.

ACSOJA has large experience in holding national and international events; encouraging and promoting research in different areas such as scientific-technical ones as well as in production and industry, always with the continuous support from EEAOC.

Taking into account ACSOJA's knowledge, and based on the relevance of Argentina in the soybean world market as well as in research and technology development, we strongly recommend considering our country and the Association to host the XII World Soybean Research Conference to be held in 2027.

Your sincerely,


JUAN JOSÉ RODRÍGUEZ
PRESIDENTE
DIRECCIÓN EEAOC

Pensando
hacia ADELANTE

Av. Willem Cross 3100
Las Talitas, Tucumán, Argentina
www.eeaoc.org.ar

C. C. Nº 9 (T110)XAC
Tel.: (54 381) 452 1000
Fax: (54 381) 452 1008

Why choose ACSOJA as organizer of the Event?

- Because it represents all links in the soybean chain.
- Because it has the support of over 32 full member institutions from the public and private sectors representing the six segments of the chain: research and development, production, input supplies, industrialization, commercialization, and services.
- Because the scientific technical sector is integrated by university and technological institutions, with an active participation of their outstanding professionals with local and international presence.
- Because as civil nonprofit organization one of its main aims is to provide training and updates on the most important aspects related to this crop.
- Because it is an organization with proven expertise on the comprehensive organization of International Events, such as 2006 Mercosoja, the Global Bioenergy Forum and 2011 Mercosoja, 2019 Mercosoja with 100 internationally renowned speakers including more than 50 foreign speakers. Every year Acsoja organizes its annual national soybean seminar.

Why choose Argentina as host country for the 2027 World Soybean Conference?


- Because it is a pacific country, historically formed by immigrants from different continents, open to the world, friendly to tourism, with a great reception capacity, and a first-level university structure, which was awarded with three nobel prizes in science.
- Because it is the third largest world producer of soybean.
- Because it is the leading exporter of soybean meal, soybean oil and biodiesel.
- Because it has a unique soybean crushing pole in Rosario region with a daily processing capacity of 207,000 tons per day nationwide, of which 80% are from the area of Rosario and the province of Santa Fe.
- Because the capacity of biodiesel production nationwide is 4,000,000 tons, and in the province of Santa Fe approximately 3.2 million tons annually.
- Because Argentine producers use world-class state-of-the-art technology:
 - **Leaders in no till farming.**
 - **Biotechnology and regulatory aspects.**
 - **Agricultural machinery**
 - **Services**
 - **AgThech Innovation.**
- At present, the sector is represented by around 680 companies that are concentrated in clusters located in the Central Region, which employ 50,000 people directly and indirectly.



Why choose Argentina as host country for the 2027 World Soybean Conference?

- In recent years, the Agricultural Machinery and Agro-components industry has evolved in quality, process and product technologies, customer service and care, safety standardization and manufacturing.
- Because it has an industry with first-class farm machinery that can handle crops efficiently.
- Because it has major futures markets where to trade soybean byproducts.
- Because it has an efficient and long-standing commercialization system.
- Because it has public and private universities that train top-level human resources.
- Because ACSOJA gathers and represents the soy universe of Argentina and actively participates in international association, also is located in the city with the largest agro-industrial pole in the country.
- Because it has renowned technical public agencies that provide their knowledge to producers (INTA- CONICET - EEAOC - Universities, etc.).
- Because Argentina is an agricultural surplus producer that allows it to become a major exporter of grains.
- Because it has not hosted a World Soybean Conference since 1989, despite presenting attractive proposals in 2013 (to host WSRC 10) and in 2017 (to host WSRC 11).





**Thank you
for considering
our proposal**

acsoja[®]
Asociación de la Cadena de la Soja Argentina